



MetroWest+

Portishead Branch Line (MetroWest Phase 1)

TR040011

Applicant: North Somerset District Council

2.41 - Easton-in-Gordano Flood Mitigation Plan

**The Infrastructure Planning (Applications: Prescribed Forms and Procedure) Regulations 2009, regulation 5(2)(o)
Planning Act 2008**

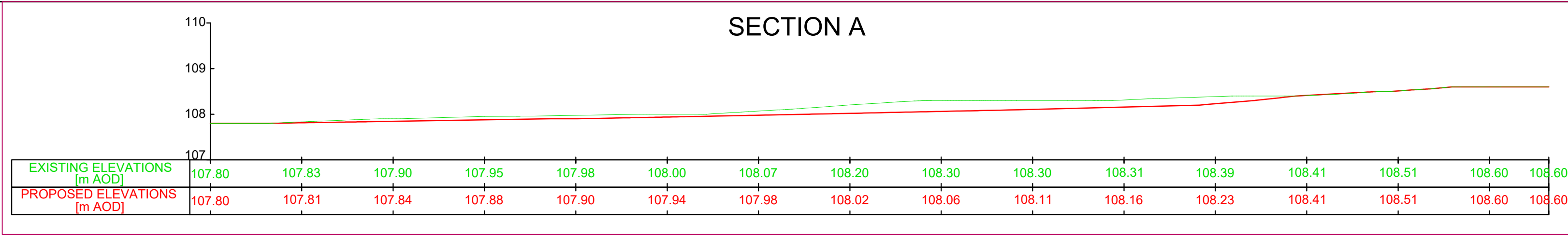
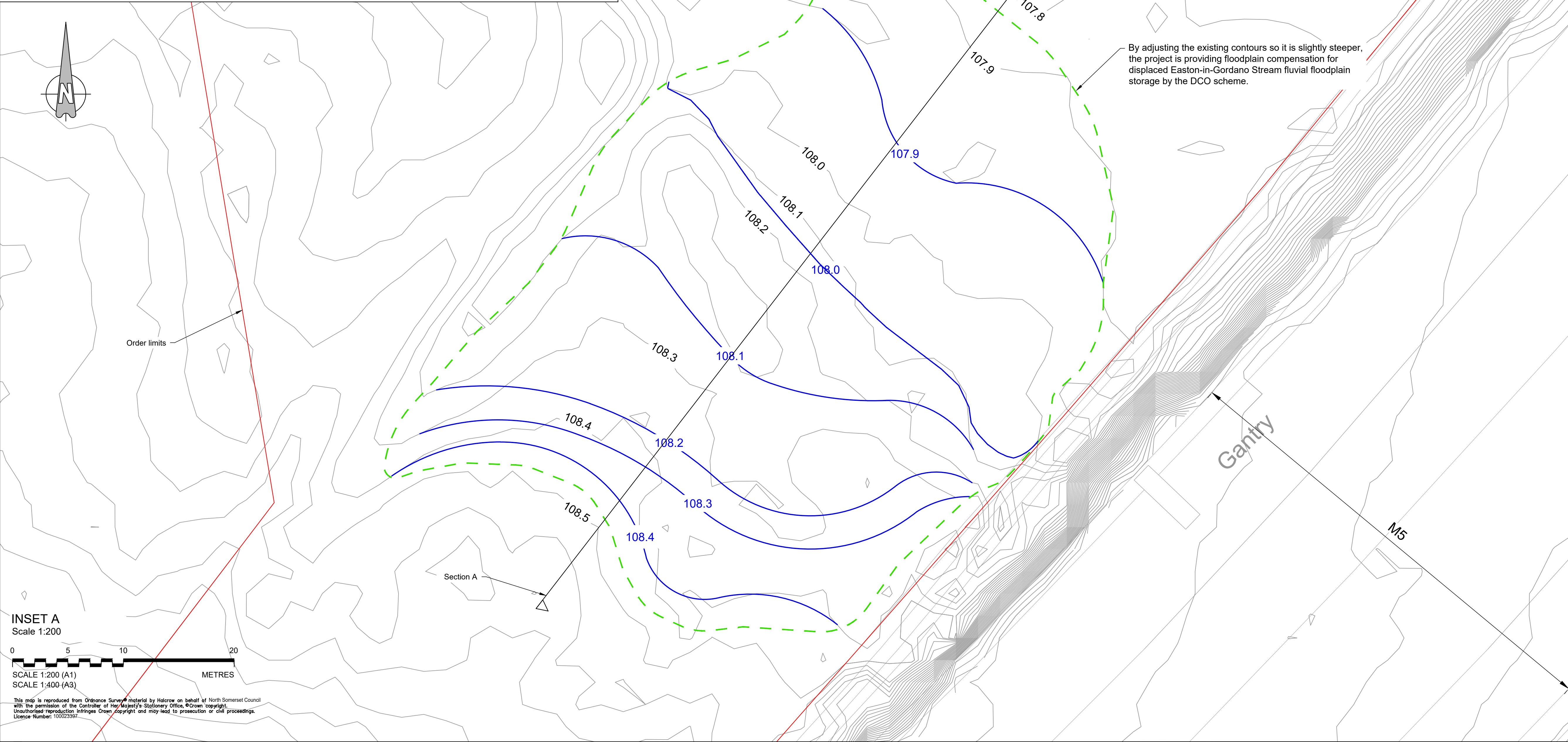
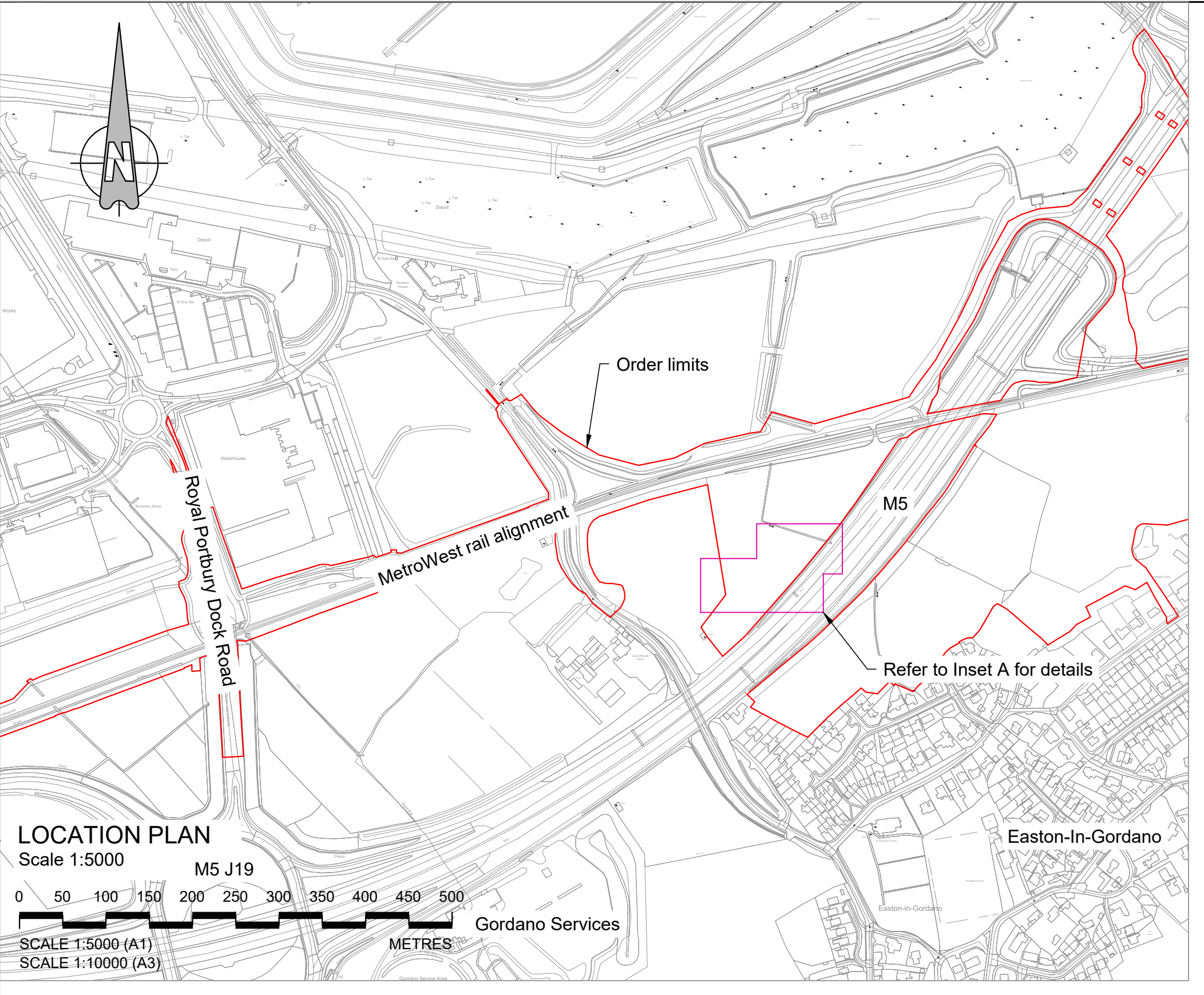
Author: CH2M

Date: November 2019



Document Index

2.41	Easton-in-Gordano Flood Mitigation Plan	The Infrastructure Planning (Applications: Prescribed Forms and Procedure) Regulations 2009, regulation 5(2)(o)	467470.BQ.04.20-SK20 Rev B
------	-----------------------------------------	-----------------------------------------------------------------------------------------------------------------	----------------------------



- NOTES
- All dimensions are in metres unless noted otherwise
 - Elevations are shown at +100m due to Network Rail requirements.
- KEY:
- 108.4 Proposed contour
 - Approximate extent of stream compensation excavation
 - 108.4 Existing contour

DO NOT SCALE. This drawing is to be read in conjunction with all relevant Architects, Engineers and Specialist Manufacturer's drawings and specifications. If in doubt please consult the Engineer.

Rev	By	Chkd	Apprvd	Date	Description
B	OHP	ADL	ADL	31/02/2019	Minor amendments
A	ADS	ADL	ADL	20/09/2019	Location plan added

travelwest
Bath & North East Somerset, Bristol, North Somerset and South Gloucestershire
Councils working together to improve your local transport

CH2M HILL
1 The Square Temple Quay Bristol BS1 6DG
Tel +44 (0)117 910 2580 Fax +44 (0)117 910 2581
www.ch2m.com

ch2m

Project: PORTISHEAD BRANCH LINE (METROWEST PHASE 1)

Drawing: EASTON-IN-GORDANO FLOOD MITIGATION PLAN

Drawn by:	OHP	Date:	07/08/2019
Checked by:	ADL	Date:	07/08/2019
Approved by:	ADL	Date:	07/08/2019

Drawing No.	Revision
467470.BQ.04.20-SK20	B

Drawing Scale: Varies

U:\Projects\467470 NSC Framework 2018\BQ.04.20 MW Phase 1 Highway Engineering\BQ.04.20-SK20 Rev B.dwg